

Module LLE FLEX 8mm EXC3

Modules LLE FLEX excite

**Product description**

- _ Dimmable 24 V constant voltage LED flextape (SELV)
- _ Ideal for application on aluminium extrusions but also for various decorative lighting applications such as cove lighting, façade accent lighting etc.
- _ 4,000 K module COI approved acc. to AS/NZS1680.2.5:1997
- _ Long lifetime up to 72,000 hours
- _ 5 years guarantee

Optical properties

- _ Colour temperature 2,700, 3,000, 4,000 and 6,500 K with SDCM 3^①
- _ Luminous flux range of 600, 1,200, 1,800 and 2,500 lm/m
- _ Efficacy of the module up to 135 lm/W
- _ Small colour tolerance (MacAdam 3), CRI 90

Mechanical properties

- _ Extremely narrow pitch distance enables short distance to diffuser and outstanding homogeneity
- _ High design freedom due to 5 cm cut-options
- _ Self-adhesive 3M tape at the backside for simple mounting on different surfaces
- _ PCB to PCB and wire to PCB connectors for toolless handling and connection
- _ reel2reel – No solder joints on the tape, easy to separate and low length tolerances

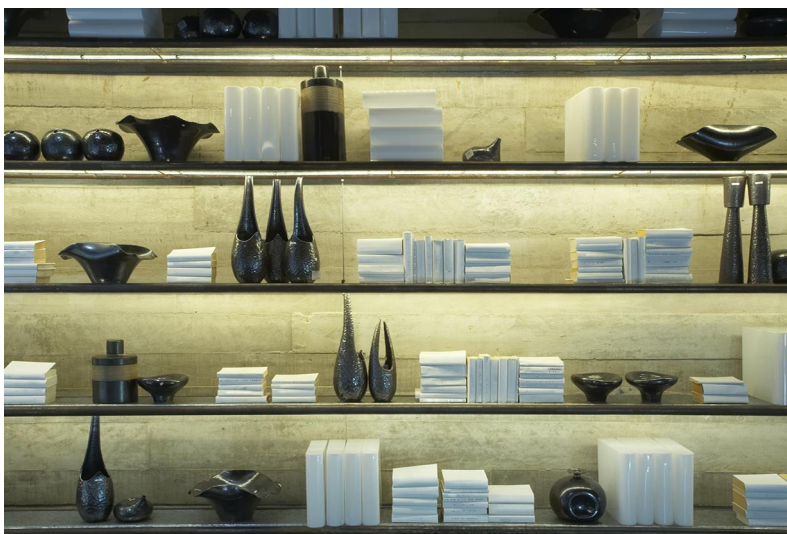
System solution

- _ System solution in combination with Tridonic constant voltage LED Driver (fixed output and dimmable)

^① Integral measurement over the complete module.

Website

<http://www.tridonic.com/28003616>



Spotlights



Downlights



Linear



Area



Floor | Wall



Free-standing



Street



Decorative

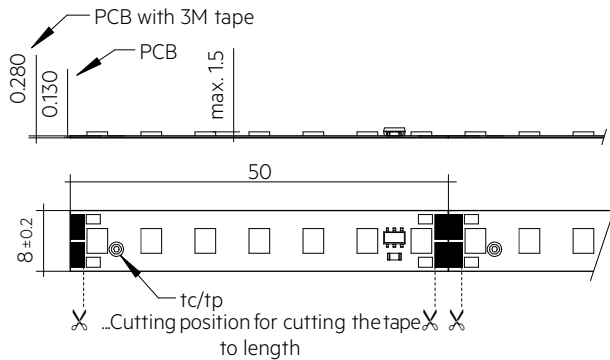


High bay

Module LLE FLEX 8mm EXC3

Modules LLE FLEX excite

The complete data sheet for this product is available in the Downloads section.



Ordering data

Type	Article number	Colour temperature	Packaging, carton	Weight per pc.
5,000 mm reel				
LLE FLEX 8x5000 15W-1800lm/m 940 EXC3	28003616	4,000 K	1 pc(s).	0.049 kg

Technical data

Beam characteristic	120°
Ambient temperature range	-35 ... +50 °C
tp rated	65 °C
tc	75 °C
Supply voltage DC	24 V
Supply voltage range DC ²⁾	21.5 – 26.4 V
Insulation test voltage	0.5 kV
ESD classification	Severity level 1
Risk group (IEC 62471) for 600 – 1800 lm/m	RG0
Risk group (IEC 62471) for 2,500 lm/m	RG1
Classification acc. to IEC 62031	Built-in
Type of protection	IP00
Lifetime	up to 72,000 h
Guarantee	5 Year(s)

Approval marks



Standards

IEC 62031, IEC 62471, IEC 61000-4-2

Specific technical data

Type	Article number	Photometric code	Typ. luminous flux at tp = 25 °C ³⁾	Typ. luminous flux at tp = 65 °C ³⁾	Typ. current consumption at tp = 65 °C ⁴⁾	Typ. power consumption at tp = 65 °C ⁴⁾	Efficacy of the module at tp = 25 °C	Efficacy of the module at tp = 65 °C	Colour rendering index CRI ⁵⁾ at tp = 25 °C
5,000 mm reel									
LLE FLEX 8x5000 15W-1800lm/m 940 EXC3	28003616	940/359	1,960 lm/m	1,800 lm/m	596 mA/m	14.3 W/m	135 lm/W	126 lm/W	> 90

²⁾ Exceeding the max. operating voltage leads to an overload on the LLE FLEX. This may in turn result in a significant reduction in lifetime or even in destruction.³⁾ Tolerance range for optical data ±15 %, measurement uncertainty ±10 %. Values given for 1 m LLE FLEX.⁴⁾ Tolerance range for electrical data ±15 %, measurement uncertainty ±5 %. Values given for 1 m LLE FLEX.⁵⁾ Measurement uncertainty CRI ±2.